



# MORNING MANTRA



Daily Derivatives & Market Report

APR 05, 2024



Indian equity benchmarks traded with volatility throughout the day and ended the sessions flat amid the Reserve Bank of India's (RBI) monetary policy decision. Besides, hawkish comments from Fed officials spurred concerns about the outlook for inflation and interest rates. Investors preferred to play safe ahead of key macroeconomic data. The broader indices, the BSE Mid cap index and Small cap index ended in green. Buying was seen in Realty sector's stock, while selling was witnessed in IT sector's stock.

After making a negative start, markets turned volatile amid weak global cues. Foreign fund outflows weighted down on the markets sentiments. Foreign institutional investors (FIIs) net sold shares worth Rs 1,136.47 crore on April 4, provisional data from the NSE showed. Further, markets traded with marginal losses, as traders were cautious with ICRA's report that growth of the Indian Securitisation market is set to slow this fiscal year keeping the trend witnessed in the last quarter of fiscal 2024 as non-banking finance companies and banks get into co-lending reducing the demand for such papers. Losses were limited after the Reserve Bank of India's (RBI's) Monetary Policy Committee (MPC) decided to Keep the policy repo rate under the liquidity adjustment facility (LAF) unchanged at 6.50 per cent for the seventh consecutive time. In late afternoon session, markets wavered between gains and losses and finally ended the session flat. Traders took note of report that Reserve Bank of India (RBI) Governor Shaktikanta Das has said that the consumption is likely to support economic growth in 2024-25, adding that urban consumption stayed buoyant. He said the resilience in cement production, together with strong growth in steel consumption and production and import of capital goods, augur well for the investment cycle to gain further traction.

On the global front, European markets were trading lower as investors reacted to hawkish comments from Federal Reserve officials and escalating tensions in the Middle East. Meanwhile, Germany's factory orders expanded in February after declining sharply at the start of the year, signaling that the recession is likely to be relatively mild. Asian markets ended mostly in red as hawkish comments from a trio of Fed policymakers as well as rising oil prices spurred more uncertainty about the outlook for U.S. interest rates. Back home, Power Minister R K Singh has said that the government has asked all power plants to operate at full capacity as it pulls all the stops to meet peak electricity demand in the searing summer season.

# MARKET SELFIE



## MARKET SUMMARY

Domestic Indices	Close	Points	% Change
SENSEX	74248.22	20.58	0.03
NIFTY	22513.70	-0.95	0.00
MIDCAP	40830.54	205.13	0.50
SMLCAP	46032.71	228.74	0.50
BSEFMC	19420.96	98.43	0.51
HEALTHCARE	35545.86	42.81	0.12
AUTO	49396.67	-83.32	-0.17
POWER	7017.49	9.78	0.14
REALTY	7392.99	108.24	1.49
BSE IT	36064.58	-159.58	-0.44
BANKEX	54590.61	451.11	0.83
OIL GAS	27833.14	-42.19	-0.15
METAL	29534.70	-32.40	-0.11
INDIA VIX	11.34	0.12	1.07

## ADVANCE - DECLINE

Index	Advance	Decline	Unchanged
NSE	1805	890	39
BSE	2426	1422	100

## MARKET TURNOVER (₹ in Crs)

Segment	Current	Previous	Net %
BSE CASH	7618	6942	10
NSE CASH	96938	113866	(15)
NSE F&O	12761753	56322974	(77)

## KEY INDICES RATIOS

INDEX	P/E	P/B	Dividend Yield
NIFTY	23.07	3.95	1.19
SENSEX	25.44	3.78	1.10

# KEY NUMBERS TRACKER



## FII – DII ACTIVITY IN CASH SEGMENT (₹ in Crs)

FII-DII*	Buy	Sell	Net
DII	9462	12833	(3370)
FII	12835	11175	1659

Note: FPI & DII Figures are provisional

## FII ACTIVITY IN DERIVATIVES SEGMENT (₹ in Crs)

FII	Buy	Sell	Net
Index Futures	2930.03	3150.28	(220)
Index Options	1236351.01	1224969.44	11382
Stock Futures	17296.67	22411.03	(5114)
Stock Options	34447.33	35194.41	(747)

## PUT-CALL RATIO

Index	Current	Previous
NIFTY	1.02	1.00
BANK NIFTY	1.30	1.04

## DOLLAR INDEX

Dollar Index	Current	Previous	% Change
DXY	104.25	104.20	0.04

## 10-YEARS G-SEC YIELD

Country	Current	Previous	% Change
INDIA	7.121	7.094	0.38
USA	4.334	4.308	0.61

## KEY COMMODITIES TRACKER (in \$)

Commodity	Current	Change Points	% Change
Gold	2294.83	6.17	0.27
Silver	26.82	0.01	0.04
Crude-Oil	86.79	0.20	0.23
Brent-Crude	91.03	0.38	0.42

# CURRENCY FUTURES & INDEX TRENDS TRACKER



## CURRENCY FUTURES

Expiry	Close	Change Points	% Change
26 APR-24 USD-INR	83.34	-0.16	-0.19
26 APR-24 EUR-INR	90.39	-0.28	-0.31
26 APR-24 GBP-INR	105.25	-0.08	-0.08
26 APR-24 JPY- INR	55.25	0.36	0.66

## INDICES – SUPPORT-RESISTANCE-PIVOT LEVELS

Index	Close	S2	S1	Pivot	R1	R2
NIFTY	22514	22383	22448	22493	22558	22603
SENSEX	74248	73771	74010	74185	74424	74600
NIFTY FUTURES	22596	22460	22528	22573	22641	22686
BANK NIFTY	48493	47652	48073	48315	48735	48978
CNX IT	35248	35031	35139	35255	35364	35480
CNX MIDCAP	50023	49540	49782	49920	50161	50300
CNX SMALLCAP	16355	16096	16226	16301	16430	16505
INDIA VIX	11.34	10.71	11.03	11.35	11.67	11.99

## INDEX TREND ANALYSIS

Index	Daily	Weekly	Monthly
NIFTY	Buy	Buy	Buy
SENSEX	Buy	Buy	Buy
NIFTY FUTURES	Buy	Buy	Buy
BANK NIFTY	Buy	Buy	Buy
CNX IT	NEUTRAL	NEUTRAL	Buy
CNX MIDCAP	Buy	Buy	Buy
CNX SMALLCAP	Buy	Buy	Buy
INDIA VIX	SELL	NEUTRAL	NEUTRAL

## SECURITIES BAN IN F&O TRADES FOR 08-04-2024

BANDHANBNK, HINDCOPPER, SAIL, ZEEL

# TECHNICAL VIEWS



## NIFTY

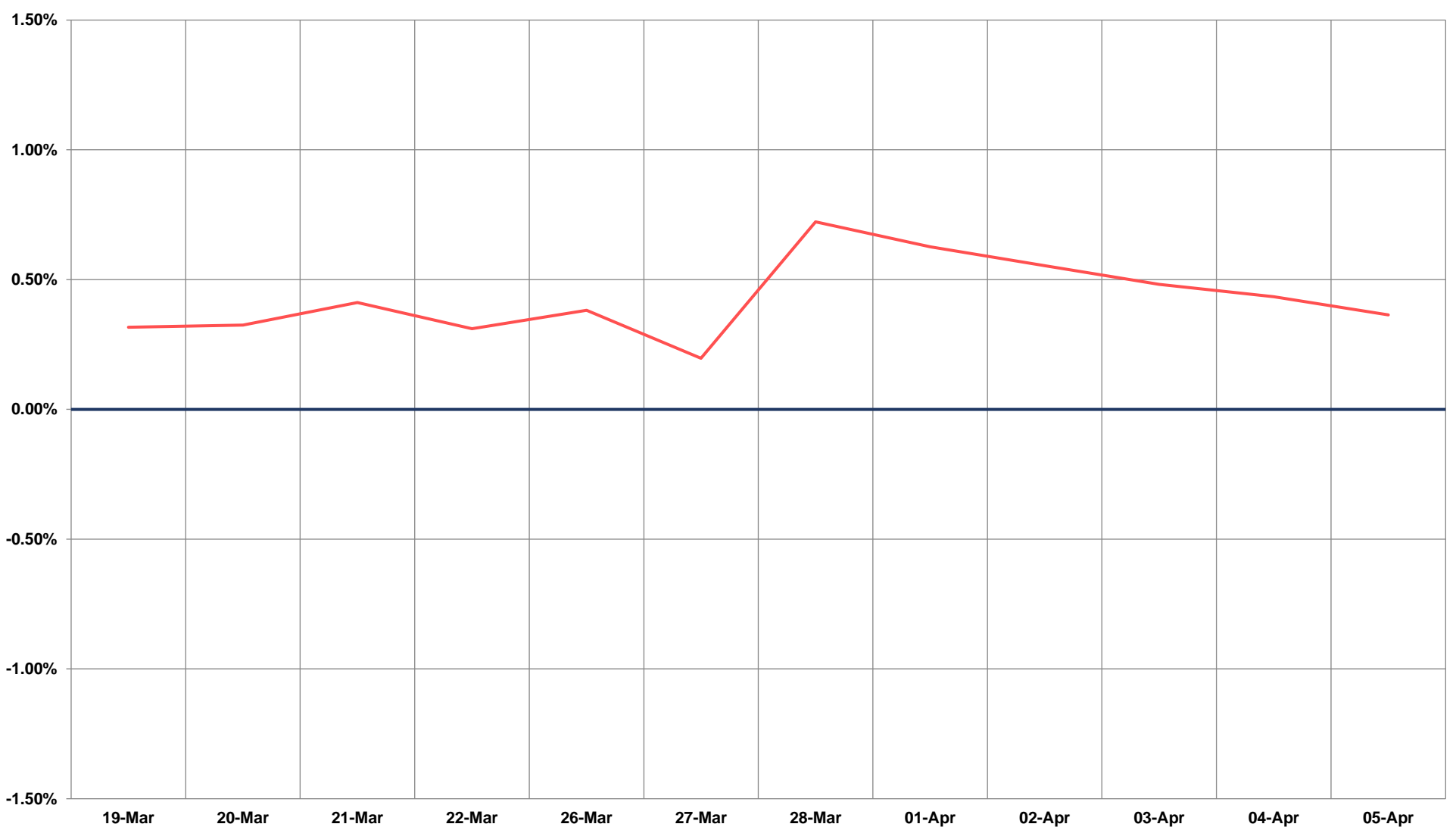
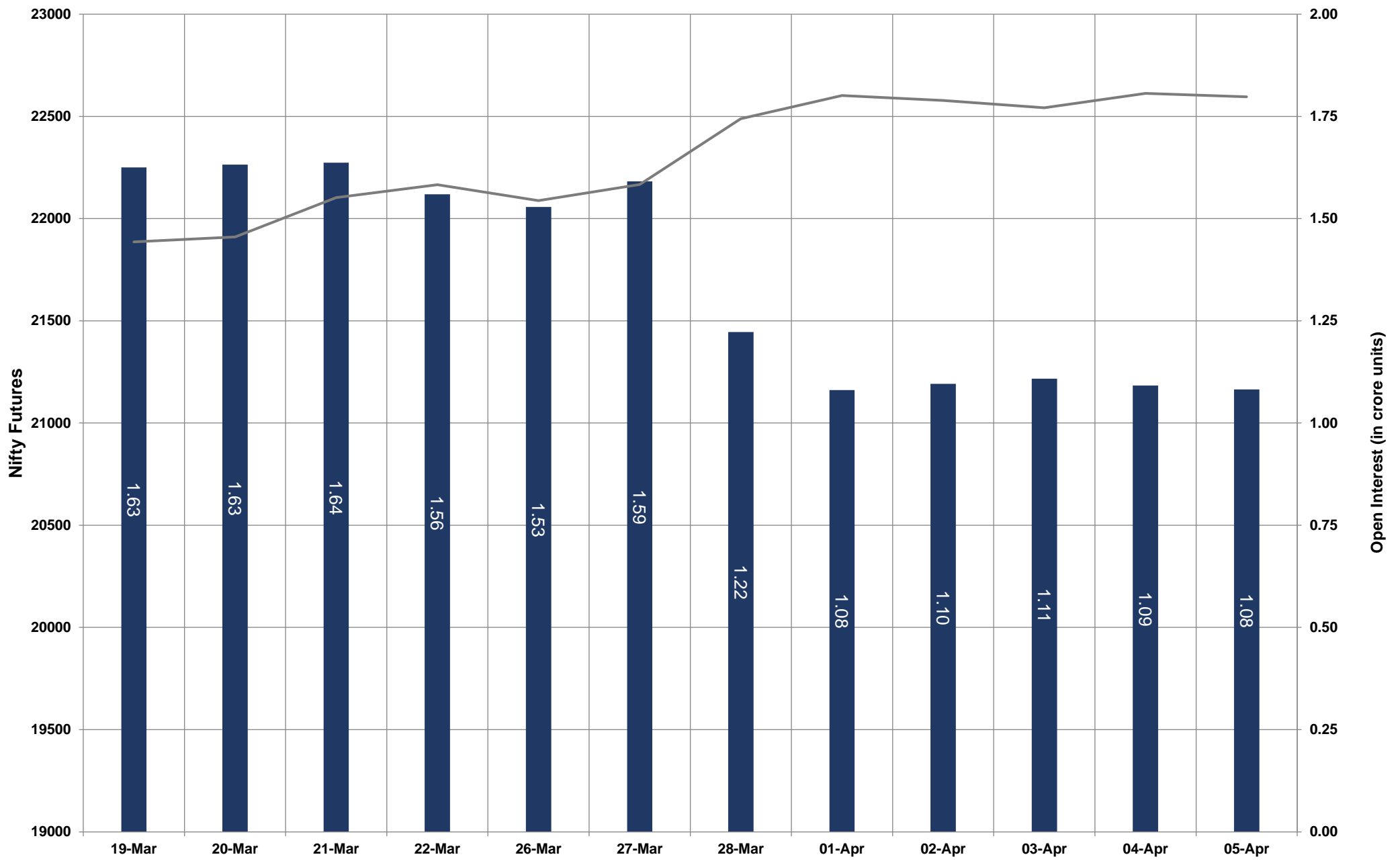


- Nifty Cash = **22513.70 (0.00%)**
- Resistance levels = **22600** and **22790**
- Support levels = **22320** and **22100**

# TECHNICAL VIEWS



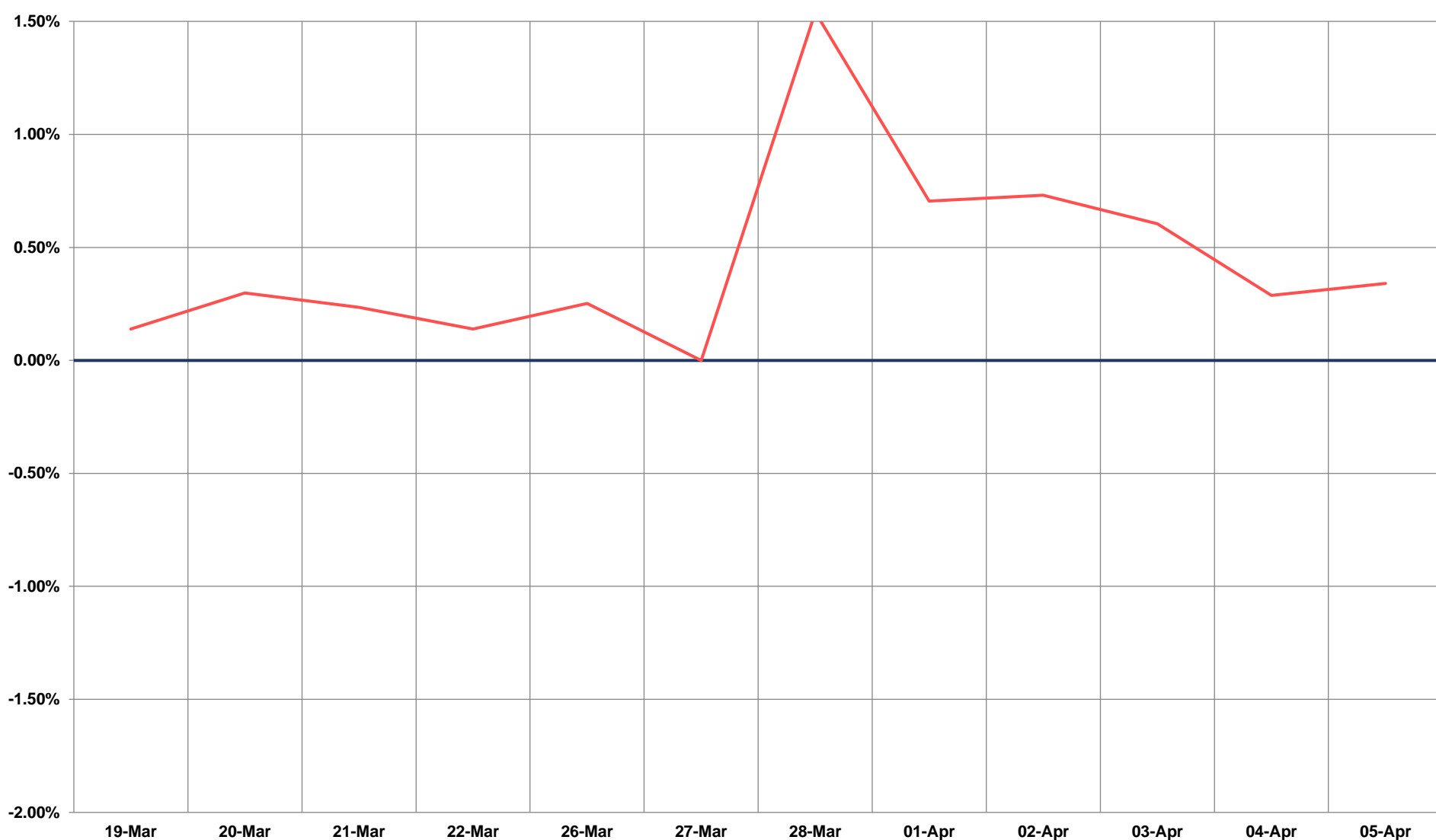
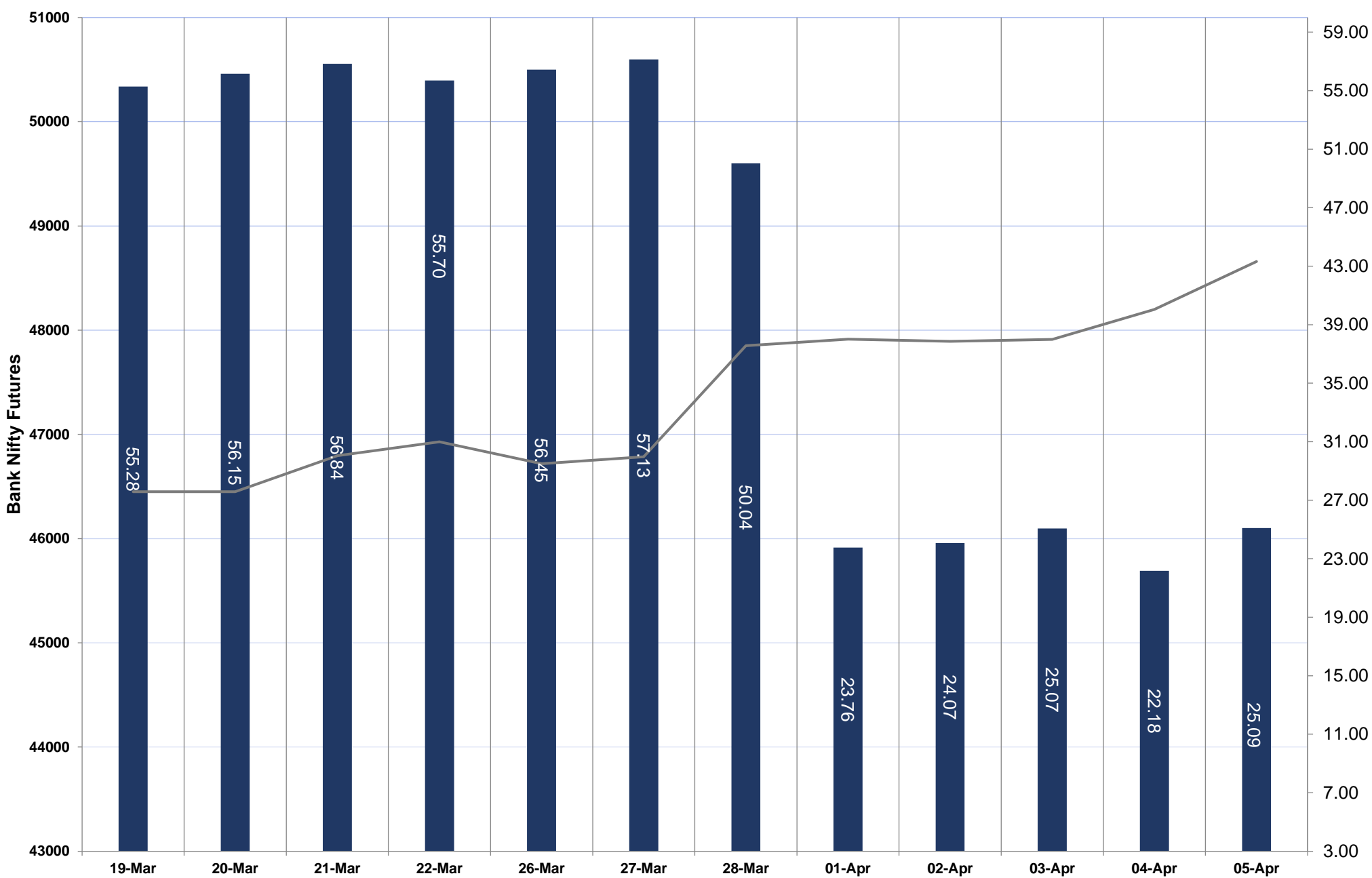
## NIFTY FUTURES



# TECHNICAL VIEWS



## BANK NIFTY FUTURES

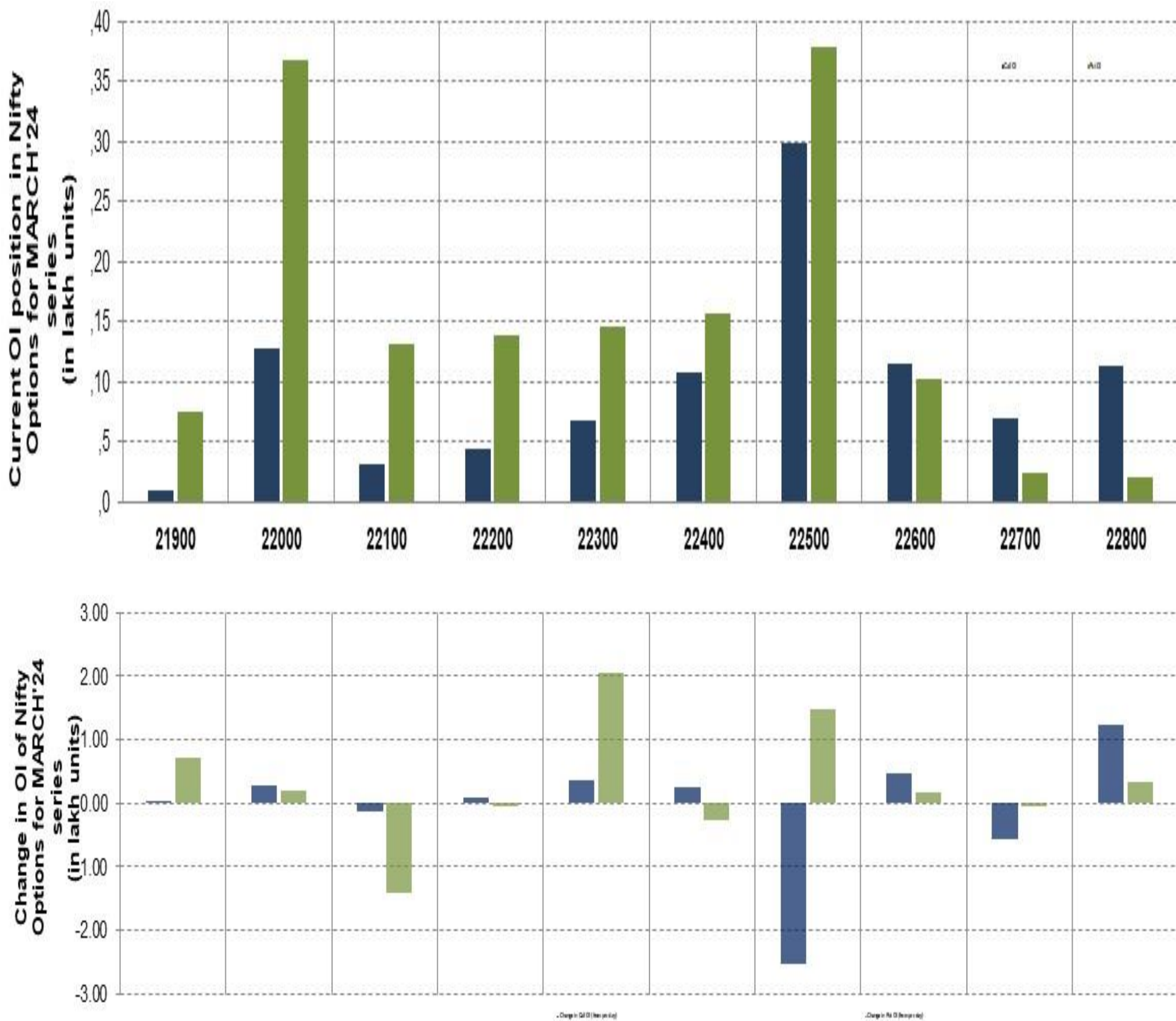




# TECHNICAL VIEWS



## NIFTY OPTIONS



- **Most Active Nifty Call** with an addition of 0.12 million in Open Interests is **Strike Price of 22800**
- **Most Active Nifty Put** with an addition of 0.20 millions in Open Interests is **Strike Price of 22300**
- **Maximum Open Interest** an outstanding was 2.97 millions for Calls at **Strike Price of 22500**
- **Maximum Open Interest** an outstanding was 3.78 millions for puts at **Strike Price of 22500**

# Disclaimer



The Information provided by SMS or in newsletter or in any document has been prepared by Shah Investor's Home Ltd (SIHL). The Information provided by SMS or in newsletter does not constitute an offer or solicitation for the purchase or sale of any financial instrument or as an official confirmation of any transaction. The information contained herein is from publicly available data or other sources believed to be reliable, but we do not represent that it is accurate or complete and it should not be relied on as such. SIHL or any of its affiliates/ group companies shall not be in any way responsible for any loss or damage that may arise to any person from any error in the information contained in this report or SMS. This Information provided by SMS, reports or in newsletter is provided for assistance only and is not intended to be and must not alone be taken as the basis for an investment decision. The user assumes the entire risk of any use made of this information. Each recipient of this Information provided by SMS, report or in newsletter should make such investigation as it deems necessary to arrive at an independent evaluation of an investment in the securities of companies referred to in this information provided by SMS, report or in newsletter (including the merits and risks involved), and should consult his own advisors to determine the merits and risks of such investment. The investment discussed or views expressed may not be suitable for all investors. This information is strictly confidential and is being furnished to you solely for your information.

The information should not be reproduced or redistributed or passed on directly or indirectly in any form to any other person or published, copied, in whole or in part, for any purpose. The information provided by report or SMS is not directed or intended for distribution to, or use by, any person or entity who is a citizen or resident of or located in any locality, state, country or other jurisdiction, where such distribution, publication, availability or use would be contrary to law, regulation or which would subject SIHL and affiliates/ group companies to any registration or licensing requirements within such jurisdiction. The distribution of this Information provided by SMS or in newsletter in certain jurisdictions may be restricted by law, and persons in whose possession this Information provided by SMS or in newsletter comes, should inform themselves about and observe, any such restrictions. The information given or Information provided by SMS, report or in newsletter is as of the date of the issue date of report or the date on which SMS provided and there can be no assurance that future results or events will be consistent with this information. This information is subject to change without any prior notice. SIHL reserves the right to make modifications and alterations to this statement as may be required from time to time. However, SIHL is under no obligation to update or keep the information current.

Nevertheless, SIHL is committed to providing independent and transparent recommendation to its client and would be happy to provide any information in response to specific client queries. Neither SIHL nor any of its affiliates, group companies, directors, employees, agents or representatives shall be liable for any damages whether direct, indirect, special or consequential including lost revenue or lost profits that may arise from or in connection with the use of the information. Past performance is not necessarily a guide to future performance. The disclosures of interest statements incorporated in the Information provided by SMS, report or in newsletter are provided solely to enhance the transparency and should not be treated as endorsement of the views expressed in the report. The analyst for this report certifies that all of the views expressed in this report accurately reflect his or her personal views about the subject company or companies and its or their securities, and no part of his or her compensation was, is or will be, directly or indirectly related to specific recommendations or views expressed in this report.